

2021 ANNUAL REPORT



**CELEBRATE THE
LEGACY**

25 IMPACTFUL YEARS

**SISTERS of CHARITY FOUNDATION
OF CANTON**

A Ministry of the Sisters of Charity Health System



A Letter From Our Leadership



Dear Friends,

The Sisters of Charity Foundation is celebrating an important milestone: 25 years of focused intentional giving.

The organization of 1996 and the organization of today are driven by the same mission and the same guiding principles. As we've worked toward systems change, we are proud of the multitude of partners we have had the privilege of working with over the years. Our relationships have shaped our goals, our strategies, and our processes.

As the African proverb states, "If you want to go fast, go alone. If you want to go far, go together."

As with any journey, it would be impossible to detail every moment, every success, or every challenge. In this report, we've highlighted just a handful of successes, all requiring the unique contributions of trusted partners who shared the commitment of the Sisters of Charity of St. Augustine: *to focus on health, education, and social services directing attention to those existing and emerging needs which are most critical.*

We are fortunate and thankful that the Sisters entrusted us with their mission. And we are grateful to our Board and staff members, past and present, who have persevered with us on this journey.

Although we have a lot to celebrate, we have so much more to do. We need our partners now more than ever. Please stay with us, focused on our shared care for those less fortunate and for the betterment of our community.

Here's to another 25 years of focused intentional giving!

Sincerely,

Jeffrey A. Halm
Board Chair

Joni T. Close
President

\$72
MILLION

total invested
over 25 years

\$118
MILLION

total leveraged
over 25 years

Table of Contents

4

Health

Highlights from our efforts to improve community health.

- Beacon Charitable Pharmacy | 5
- Health Policy Institute of Ohio | 6
- Mercy Dental Clinic | 6
- THRIVE | 9
- Mental Health Six Sigma Improvements | 9

10

Education

A look back at our educational partnerships.

- Early Childhood Resource Center | 11
- SPARK | 12
- Golden Key Center for Exceptional Children | 12
- Ready Schools | 15
- Bullying Prevention | 15

16

Social Services

A selection of efforts to strengthen our community's safety net.

- Hammer and Nails | 17
- Building Bridges Ministry at St. Anthony / All Saints Parish | 18
- Goodwill Employment Program | 18
- Stark Housing Network | 21
- The Military Family Center | 21

22

2021 Grant Recipients

A comprehensive list of programs we supported in 2021.

- Foundation-led Initiatives | 23
- Strategic Collaborations | 24
- Responsive Efforts | 26



Health

For over 170 years, the mission of the Sisters of Charity of St. Augustine has been rooted in the belief that health care is a fundamental right. Whether it's physical, behavioral, or oral health, every person deserves equal access to high-quality health care.

2002

Beacon Charitable Pharmacy

In 2002, it became clear that there was a need for increased access to prescription medication for uninsured and underinsured residents of Stark and Carroll counties.

After a series of community convenings, the Austin-Bailey and Sisters of Charity foundations, along with the Health Foundation of Greater Massillon, provided start-up funding for Beacon Charitable Pharmacy (formerly known as the Prescription Assistance Network of Stark County). It was the second charitable pharmacy established in Ohio.

Beacon provides free or extremely inexpensive medications. Many patients have multiple chronic health issues that require extensive medication monitoring and coordination. Beacon provides the education and support that help them manage their conditions and collaborates with health care providers and social services agencies on their behalf.

\$16
MILLION
Invested
OVER 25 YEARS

More than

39,000
clients

have received medication through
Beacon Charitable Pharmacy.

Since 2009, Beacon has provided more
than 250,000 prescriptions valued at over

\$27
million.

2003

Health Policy Institute of Ohio

When legislators and other stakeholders need to make informed decisions that affect public health, they need the latest research, coupled with objective analysis. The Health Policy Institute of Ohio (HPIO) is a nonpartisan organization that educates stakeholders on the numerous factors affecting the health of Ohioans.

HPIO was founded in 2003 by a group of eight Ohio-based funders, including the Sisters of Charity Foundations of Canton and Cleveland. Its work is driven by the belief that sound policy decisions will lead to equity, improved health, and sustainable health care spending.

HPIO's data briefs, white papers, and dashboard data provide easily understood, unbiased information on critical public health topics, including the long-term consequences of childhood trauma, the gap in life expectancy between affluent and impoverished Ohioans, and how investing in prevention programs will save taxpayers money in the long term.

\$36

MILLION

Leveraged

2007

Mercy Dental Clinic

In 2007, in partnership with Cleveland Clinic Mercy Hospital (then Mercy Medical Center), the Sisters of Charity Foundation funded a feasibility study that determined there was a significant need for access to oral health care for the poor and underserved in Stark County. In response, Mercy and the Foundation established a dental clinic and dental residency program at Mercy, with early support from the Austin-Bailey Health and Wellness Foundation and the Stark County Dental Society. The goal was to increase access to high-quality dental care for low-income and underserved families.

The residency program helps dentists sharpen their skills and learn to treat patients in a holistic manner. Cutting-edge technology ensures the residents can meet the needs of dramatically underserved patients, including wheelchair users and people with cerebral palsy, multiple sclerosis, and other conditions.

As Stark County continues to experience a shortage of dentists, this state-of-the-art residency program attracts new providers to our area and gives them experience in treating a diverse population.





“ **THRIVE continues to partner across the county to develop a sustainable approach to eliminating disparities in outcomes for our babies. There is no choice: every baby deserves to celebrate their first birthday.** ”

2013

THRIVE

In 2013, Stark County was designated an infant mortality hot spot. For every thousand babies born, we were losing 9.8 before their first birthday. And the rate of African-American infant deaths was nearly triple the rate of Caucasian infant deaths.

Stark County's THRIVE (Toward Health Resiliency for Infant Vitality and Equity) effort has been working hard to change that by partnering throughout the community to provide prenatal care, education on safe sleep practices, home visiting services, fatherhood services, and care coordination.

THRIVE's most comprehensive effort is its community health worker (CHW) program, which helps at-risk pregnant women and families with children under a year old. CHWs increase the likelihood of healthy birth outcomes by guiding and supporting moms, and by connecting them with community resources that will help them get healthy, stay healthy, and meet their needs (including transportation, housing, education, and employment). Medicaid managed care plans pay a portion of the cost, which strengthens program sustainability.

In 2014, the Foundation joined Aultman Hospital and Mercy Medical Center to support a THRIVE coordinator position. Since that time, the Foundation has invested nearly \$500,000 in the THRIVE program and in the evaluation of program outcomes.

2018

Mental Health Six Sigma Improvements

Our local mental health organizations are a critical component of the social safety net. The Sisters of Charity Foundation partnered with Stark County Mental Health and Addiction Recovery and Cleveland Clinic Mercy Hospital to stabilize, streamline, and improve their operations.

The work relies on the Six Sigma process for continuous improvement. Six Sigma helps an organization define a problem; quantify it; analyze its cause; and implement, verify, and maintain a solution.

Work started with Child and Adolescent Behavioral Health and continues at organizations throughout the community, including CommQuest and Coleman Health Services. The effort is funded by an ever-expanding group of supporters, including several local foundations. The process has identified inefficiencies and bottlenecks and has revealed common-sense changes that make major impacts. The results have been impressive: Medicaid denial rates have declined sharply and billing errors have decreased significantly, as has the waiting time for Medicaid payments.

In fact, outcomes have been so beneficial that Cleveland Clinic Mercy Hospital has committed to continuing this work as part of its community outreach effort.

A young girl with her hair in a bun, wearing a denim jacket, is sitting at a desk in a classroom. She has her mouth wide open in a joyful shout and her arms are raised in the air. Other students are visible in the background, some also with their arms raised.

\$26

MILLION

Invested

OVER 25 YEARS

Education

Walt Disney said, "to succeed, work hard, never give up, and above all, cherish a magnificent obsession." Our magnificent obsession: changing the world by making sure every child has every opportunity to be successful in school and in life.

2000

Early Childhood Resource Center

In 2000, the Sisters of Charity Foundation of Canton established the Early Childhood Resource Center to provide much-needed training and support for Stark County's early childhood professionals.

After a decade of operation, the Center branched out to serve Stark County's families as well. From its new, larger facility (made possible by an outpouring of community support), the Center was positioned to take on the management and operation of the Sisters of Charity Foundation's SPARK program and to become the State's Child Care Resource and Referral Agency serving Mahoning, Medina, Portage, Stark, Summit, and Trumbull counties.

In 2020, in response to ever-increasing community need, local funders supported the creation of Stark County's first early childhood campus. Today, the Center serves thousands of educators, caregivers, parents, kinship caregivers, and prospective foster parents.

THE CENTER HAS GROWN DRAMATICALLY.

A decade ago, it served only Stark County and had fewer than **10 employees.**

The annual budget was just shy of **\$592,000.**

Today, nearly **50 employees**

serve six northeast Ohio counties, and the budget exceeds **\$5 million.**

2003

SPARK

The SPARK kindergarten readiness program was created by the Sisters of Charity Foundation, in partnership with the W.K. Kellogg Foundation.

Each month, SPARK home visitors, known as *parent partners*, visit the homes of preschool-age children. They help families get ready for kindergarten, provide books and learning supplies, and address children's challenges that might prevent school readiness (including speech delays and behavioral concerns).

SPARK positions the parent as the child's most powerful teacher. By equipping the parent with highly effective engagement techniques, SPARK empowers a lifelong learning advocate who can make all the difference for a child's school and life success.

SPARK participation leads, in a very direct way, to sustained achievement. SPARK children entering kindergarten significantly outscore their non-participating peers on the state assessment that measures skills important for school success. They also had significantly higher reading and math scores in third grade and again in fifth grade. So even six years after leaving the program, SPARK children retained an educational advantage.

Since its creation in 2003, SPARK has served nearly

17,000

children in counties throughout Ohio.

2007

Golden Key Center for Exceptional Children

The Golden Key Center for Exceptional Children provides high-quality child care, education, and intervention services for children with special needs and developmental disabilities. Golden Key was co-founded in 2007 by Terry Frank, M.Ed., an autism intervention and educational specialist, and Kathy Catazaro-Perry, a registered nurse and mother of a special needs child (and the current mayor of the city of Massillon), with help from the Arc of Stark County and the Stark County Board of Developmental Disabilities (previously the Board of MRDD). The Sisters of Charity Foundation provided the first operating grant.

To meet an ever-increasing need, Golden Key has expanded over the years; it now operates as a full-service charter school for students from multiple school districts, providing child care, intervention services, specialized therapies, a preschool program, extracurricular programming, and a summer camp program.

The Foundation has also funded ongoing operations, a Lego therapy program, and a program for children experiencing feeding difficulties.



\$58

MILLION

Leveraged



2008

Ready Schools

Schools are increasingly finding that when they reach beyond their walls, it's transformative—for children, for families, and for the community.

Ready Schools welcome, honor, and partner with families to help children learn and succeed, and they collaborate with preschools, care providers, and community organizations to ensure children make smooth transitions into the elementary environment.

The Ohio Ready Schools Initiative resulted from a 2008 partnership between the Ohio Association of Elementary School Administrators, the Ohio Department of Education, the Sisters of Charity Foundation, and the W.K. Kellogg Foundation. Initially, eight schools participated in a two-year pilot project supported by the W.K. Kellogg Foundation. As the initiative has grown, its work has been supported through public and private dollars.

Nearly 70 Ready Schools have collaborated with early childhood education providers and community support agencies, engaging whole families in school activities and connecting with each other to share, learn, and offer support.

2011

Bullying Prevention

In 2011, the Sisters of Charity Foundation of Canton provided start-up funding to support a collaborative response to bullying in schools. Stark's countywide initiative is now known as *Stark Speaks UP for Kindness*. The Stark County Educational Service Center oversees the work, which focuses on cultivating a safe and positive school climate at all grade levels.

Teachers report more positive relationships with their students, a consistent increase in student willingness to address bullying issues with school staff, and a decrease in vandalism and truancy. The participating schools remain engaged in their work to become Stark County's community kindness leaders. In many schools, student-led committees are supplementing the efforts of school personnel, to further embed kindness into school culture.



\$30

MILLION

Invested

OVER 25 YEARS

Social Services

The conditions in which people are born, grow, work, live, and age impact every aspect of their well-being. A strong community requires a stable and healthy environment for all, including access to housing, food, transportation, and employment.

1997

Hammer and Nails

Hammer and Nails provides property repairs, maintenance, and wheelchair ramps for our Stark County neighbors who are veterans, elderly, disabled, or low-to-moderate income. Homeowners who can help with repairs are required to do so. Most work, however, is accomplished by calling upon a roster of dedicated volunteers.

Hammer and Nails has helped more than 1,700 Stark County homeowners to date, and there's a steady waiting list of those in need. Services are provided free of charge.

In 2018, local funders (the Deuble, Hoover, Paul and Carol David, Sisters of Charity, Stark Community, and Timken foundations) came together to fund the purchase and renovation of a suitable, safe, accessible office location in northwest Canton that offers ample parking and storage space for work vehicles and equipment.

Four kinds of assistance are provided, categorized by the acronym PUSH:

P

Preservation

(includes things like painting and weatherization)

U

Upkeep

(includes landscaping)

S

Safety

(includes installation of ramps, railings, & smoke detectors)

H

Health

(includes mitigation of lead paint)

2001

Building Bridges Ministry at St. Anthony / All Saints Parish

Since 2001, the Building Bridges ministry has helped Stark County's Latino immigrants achieve self-sufficiency, understand their rights, and plan stable lives. Under the leadership of Sister Karen Lindenberger, the ministry serves documented and undocumented individuals and families. Many live on incomes well below the federal poverty level. The Sisters of Charity Foundation has been a long-time supporter of this important ministry and is grateful to Sister Karen for her passion and commitment to serving.

In addition to Spanish Sunday mass and other faith-related activities, outreach services include:

- Transportation to and from errands, appointments, classes, or events.
- Visiting families in their homes or individuals who are incarcerated to provide emotional support and connect them to community resources.
- Translation services to facilitate communication with school personnel, medical professionals, social services providers, landlords, and lawyers.
- A summer preschool program for children who speak little or no English.

2015

Goodwill Employment Program

Earning an associate's degree, gaining customer service skills, or changing career paths: these are just some of the goals participants are working toward while they participate in employment programs offered by Goodwill Industries of Greater Cleveland and East Central Ohio.

In the *Employment GPS* (formerly *Dream to Achieve*) program, the focus is on goal setting, planning, and support. Each client has unique goals; support for achieving those goals cannot be one-size-fits-all.

Goodwill's program, which offers intensive guidance focused on those employment and educational goals, partners with individual participants as they work to achieve their dreams.

The program emerged from a collaboration between several Stark County organizations, including the Sisters of Charity Foundation of Canton, Goodwill, and OhioMeansJobs.

OhioMeansJobs has been a valuable partner in the collaborative, proposing ways to coordinate services to meet clients' needs. Today, the program continues offering personalized services to those hoping to advance.

\$24

MILLION

Leveraged





2016

Stark Housing Network

The creation of the Stark Housing Network was led by the Sisters of Charity Foundation and widely supported by local government, nonprofit, and community leaders. Today, the Network is instrumental to Stark County's response to homelessness. It manages and analyzes a wide range of data provided by the numerous organizations addressing homelessness. The Network then applies for federal funding on behalf of all the organizations and oversees allocation of that funding in a fair and transparent manner.

In addition, the Network manages the Homeless Continuum of Care of Stark County, which is working to end homelessness and other housing crises. Continuum of Care members include the many agencies that provide shelter, housing, and supportive services to individuals and families.

Since the network was established, overall homelessness in Stark County has decreased by

27%

and homelessness among families with children has decreased by

46%.

2017

The Military Family Center

Stark County is home for nearly 30,000 veterans. Pegasus Farm's Military Family Center supports and empowers veterans, military service members, first responders, and their families. The Center provides equine-assisted activities, occupational and physical therapy, individual and family counseling, and social activities, all situated on 19 beautiful acres in Louisville.

Equine-assisted activity is uniquely effective at helping individuals build resilience as they confront life challenges, especially those resulting from their service to country and community. Horses are non-judgmental, and they're highly responsive to the humans who interact with them. Riding, driving, or even just working with horses can reduce anxiety and promote the mindfulness and social connectivity these individuals need to heal.

Along with early operating support, the Sisters of Charity Foundation joined several local organizations and foundations to fund the capital campaign to purchase and renovate the Center.

“ The true measure of any society can be found in how it treats its most vulnerable members.

-Mahatma Gandhi

2021

GRANT RECIPIENTS

\$3,298,419

TOTAL INVESTED

Foundation-Led Initiatives Total: \$1,437,869

Early Childhood

Early Childhood Resource Center \$260,000
To support the workforce development retention and financial sustainability project, over two years

Other \$132,321
Early childhood program-related expenses

Total: \$392,321

Homelessness

Coleman Health Services \$15,000
To support operating costs for the permanent supportive housing project serving transitional-age youth in Massillon

ICAN Housing \$22,500
To support technology and other infrastructure needs as part of the *Legacy Initiative* quality improvement effort

ICAN Housing \$290,078
To support expansion of the workforce development program serving people exiting homelessness, over three years

Stark Housing Network \$5,000
To support diversion training

Other \$94,747
Homelessness program-related expenses

Total: \$427,325

Mental Health

CommQuest Services \$396,532
For infrastructure support to improve operational performance, over three years

Stark County Mental Health and Addiction Recovery \$129,375
To partner on the leadership development program, over three years

Other \$92,316
Mental health program-related expenses

Total: \$618,223

Strategic Collaborations Total: \$891,966



Chronic Disease

Access Health Stark County \$240,000

To support the community health worker project focused on chronic disease, over three years

Total: \$240,000

Education

Boys and Girls Club of Massillon \$55,444

To mitigate pandemic-related learning loss by supporting the *KidStop* summer program, providing tutoring aligned with local school districts, and offering mental and behavioral health support through Child and Adolescent Behavioral Health

Child and Adolescent Behavioral Health \$93,954

To provide behavioral health services for children participating in after-school programs offered by the YMCA of Central Stark County, the Boys and Girls Club of Massillon, and Lighthouse Ministries

Child and Adolescent Behavioral Health \$53,316

To support mental and behavioral health services for children enrolled in summer programs offered by the YMCA of Central Stark County (in the Alliance, Canton, and Plain Local school districts), and by Lighthouse Ministries (in Canton)

Fairless Local Schools \$12,270

To support an expanded summer program to mitigate pandemic-related learning loss for students entering kindergarten through third grade

Golden Key Center for Exceptional Children \$29,769

To support an enhanced summer program and provide specialized intervention services for children with developmental delays, in order to mitigate pandemic-related educational and behavioral learning losses

Lighthouse Ministries of Canton \$17,020

To support math instruction in the summer enrichment camp to mitigate pandemic-related learning loss, and to support development of a system to evaluate after-school programming

Massillon Family YMCA \$20,000

To support technology, reading, and math instruction in the summer program to mitigate pandemic-related learning loss

Our Lady of Peace Elementary School \$47,122

To support reading and math instruction in the summer program to mitigate pandemic-related learning loss

St. Anthony/ All Saints Parish \$4,000

To support a summer program for children who speak English as a second language, over two years

Stark County District Library \$89,000

To cover the cost of creating and distributing summer learning kits for Canton City students entering kindergarten through third grade

Tiqvah Hands of Hope \$12,544

To support staffing costs for an enhanced summer program to mitigate pandemic-related learning loss

YMCA of Central Stark County \$67,527

To support enhanced programming in reading and math to mitigate pandemic-related learning loss at summer camps in the Alliance, Canton, and Plain Local school districts

Total: \$501,966

Infrastructure Support

YMCA of Central Stark County \$150,000

To support the Director of Community Development position, over three years

Total: \$150,000

Responsive Efforts Total: \$968,584

Adaptive Sports Ohio \$10,000
To support the purchase of *Everyone Plays* starter kits, over two years

Catholic Charities of Portage and Stark Counties \$50,000
To support the emergency assistance and adult day services programs

City of Canton \$150,000
To support renovations at 1318 Gonder Place SE to create a medical center and grocery store for southeast Canton residents

Cleveland Clinic Mercy Hospital \$100,000
To support the *Healing After Violent Encounters Network* (HAVEN) forensic nursing program

Community Legal Aid Services \$50,000
To support the *Neighborhood Law* project

Dueber United Methodist Church \$15,000
To support *Dueber Kids' Club* program

Faith in Action of Western Stark County \$20,000
To provide transportation services for senior citizens, over three years

Hartville Migrant Ministry \$22,515
To support a pilot program for mental health services, over two years

Health Policy Institute of Ohio \$150,000
For operating support, over three years

Legacy Project of Stark \$15,000
To support curriculum books and mentor training for school districts that serve vulnerable neighborhoods

Pegasus Farm \$3,800
To support a database expansion

Pegasus Farm \$26,269
To support horticultural training and educational services

She Elevates \$7,500
To support the *She Elevates Academy* program, over two years

Stark Economic Development Board \$60,500
For operating support, over three years

Tiqvah Hands of Hope \$40,000
To support an after-school program serving Canton children

United Way of Greater Stark County \$150,000
To support a portion of the costs covered through United Way sources for school-based teams that Coordinate and Align Resources to Engage, Empower, and Educate our youth (known as *CARE* teams)

Vantage Aging \$70,000
To support home-delivered meals to low-income Stark County seniors, over two years

Total: \$940,584

Special Projects

Domestic Violence Project, Inc. \$1,500
To support emergency water heater system replacement

YWCA Canton \$15,000
To support emergency assistance for residents displaced from the Gateway II facility

YWCA Canton \$5,000
To support an organizational assessment

Total: \$21,500

Board Honorariums

Association for Better Community Development \$500
A gift on behalf of retiring director Ronald S. Young

Greater Stark County Urban League \$1,000
For operating support, a holiday gift from the Foundation Board of Directors

JRC \$1,000
For operating support, a holiday gift from the Foundation Board of Directors

Victim Assistance Program \$500
A gift on behalf of retiring director Susan Kunkle

YWCA Canton \$3,500
For operating support, a holiday gift from the Foundation Board of Directors

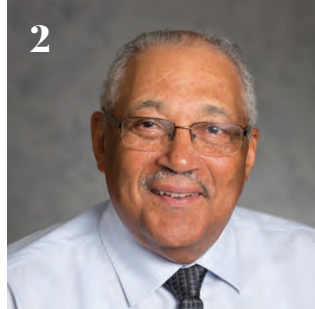
Total: \$6,500



Board of Directors



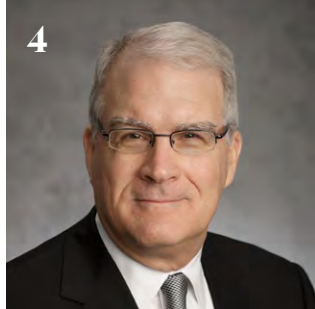
1 Jeffrey A. Halm
Chair



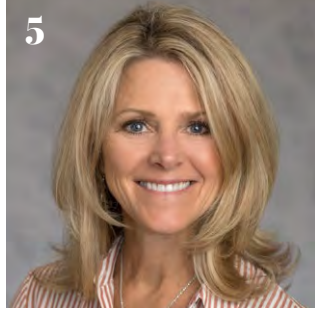
2 Ronald S. Young
Treasurer



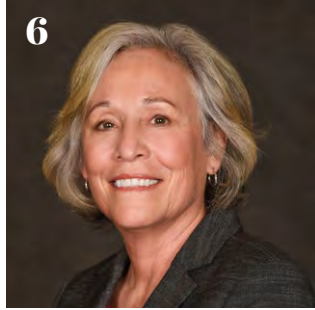
3 Judge Rosemarie Hall
Secretary



4 Robert F. Belden



5 Debra Bentivegna



6 Joni T. Close
(ex officio)



7 Albert T. Domingo
MS, MD



8 Susanna H. Krey
(ex officio)



9 Susan M. Kunkle
Ph.D.



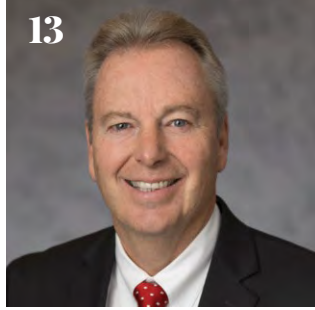
10 Sister Jane Lab
CSA



11 James Leahy



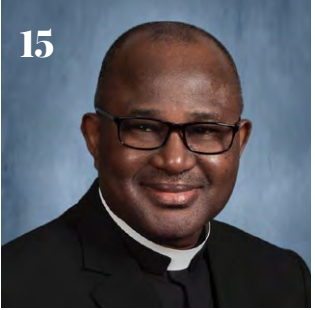
12 Judge Sara Lioi



13 C. Todd Locke



14 Joseph R. Luckring



15 Reverend Benson C.
Okpara



16 Elaine Russell Reolfi



17 Joseph D. Schauer



18 Jeffery S. Talbert

Staff

Joni T. Close
President

Liz Ford
Office Manager/Administrative Assistant

Jennifer Haude
Communications Specialist

Anne G. Savastano
Grants and Operations Manager

Richelle M. Wardell
Program Officer

Shannon McMahon Williams
Program Officer



Mission

The Sisters of Charity Foundation of Canton supports and furthers the mission and ministry of the Sisters of Charity of St. Augustine. The principal components of their ministry are health, education, and social services. The Foundation's focus is on issues of social justice relating to the poor and underserved in the Spirit of Jesus Christ.

Vision

To improve the quality of life of the poor and underserved so they can live to their fullest potential, by initiating systemic change, enhancing community connections, serving as a community change agent to advocate for the poor, and promoting innovative strategies to impact the root causes of poverty.



**SISTERS of CHARITY
FOUNDATION
OF CANTON**

A Ministry of the Sisters of Charity Health System

400 Market Avenue North, Suite 300
Canton, OH 44702

330.454.5800
scfcanton.org

